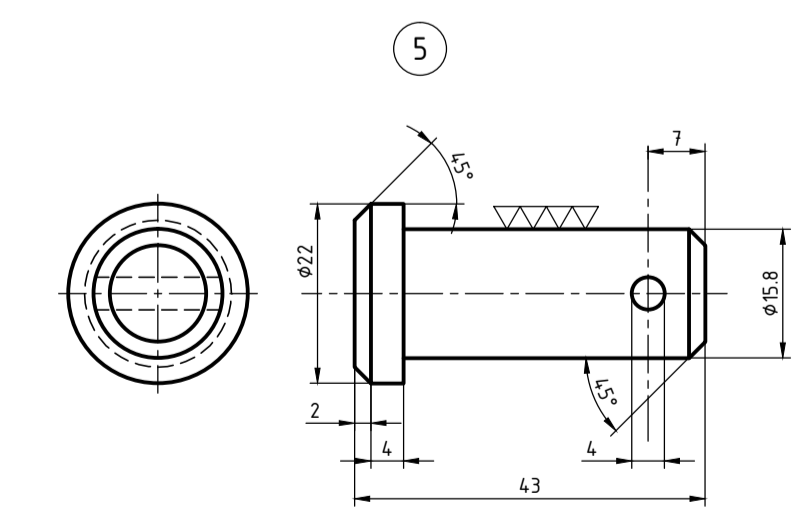
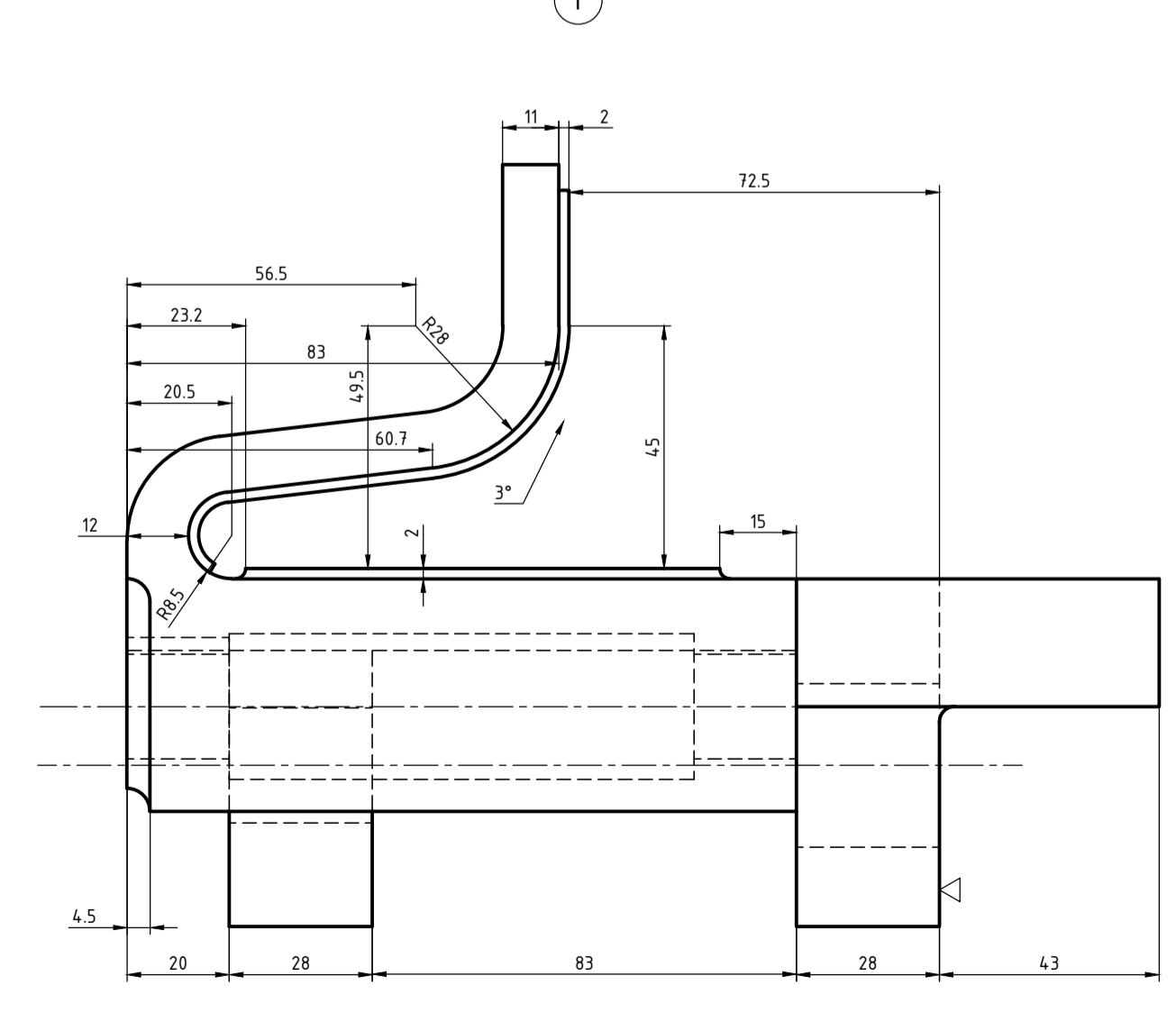
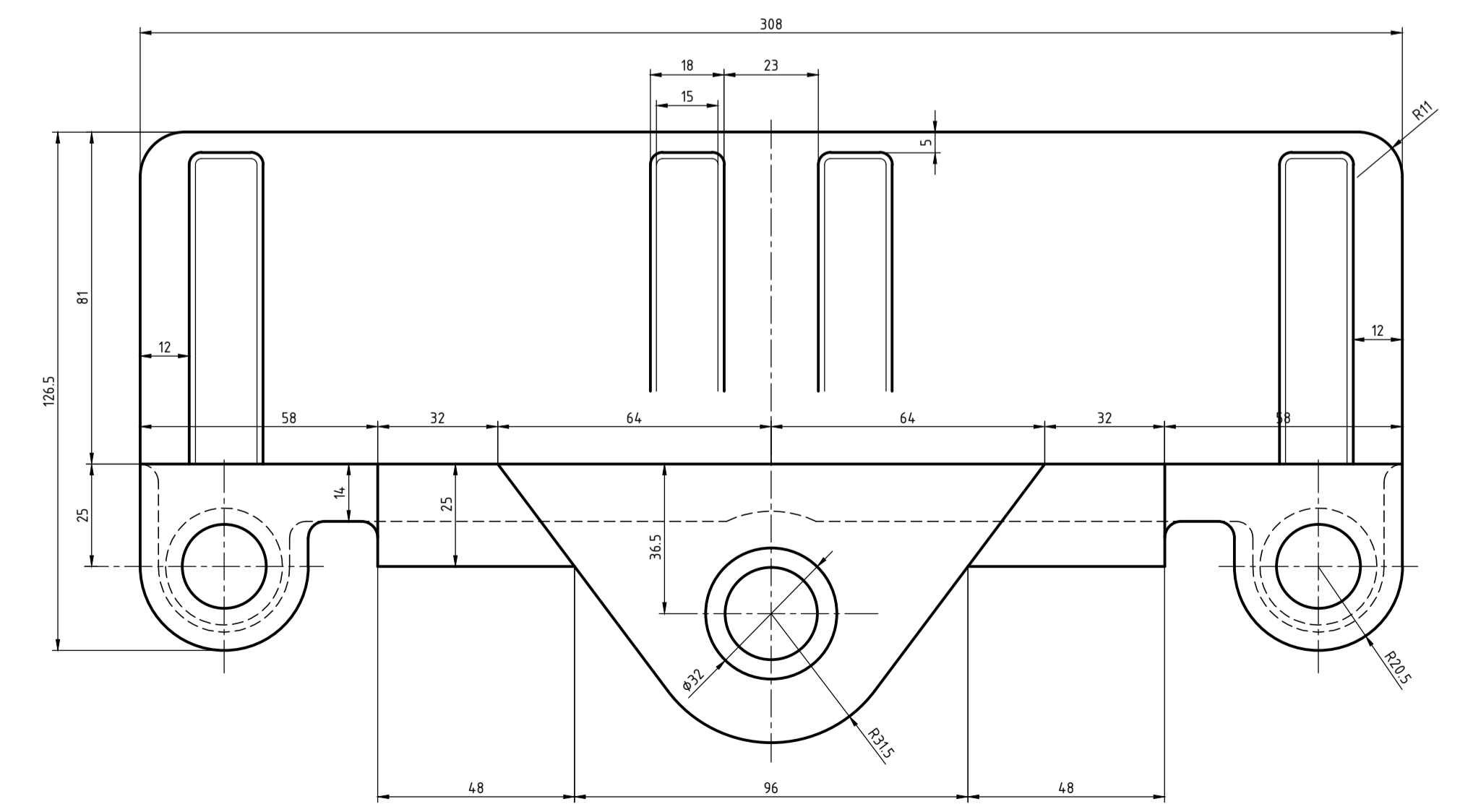
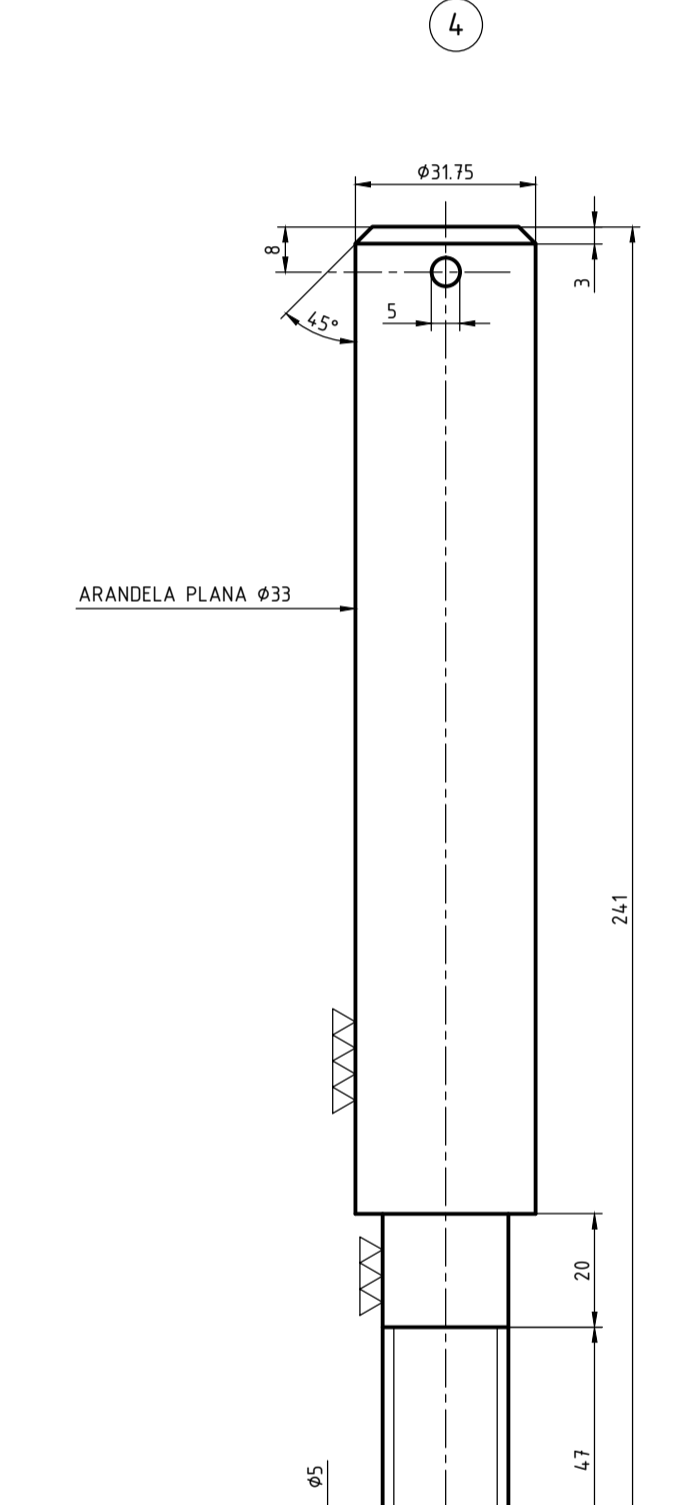
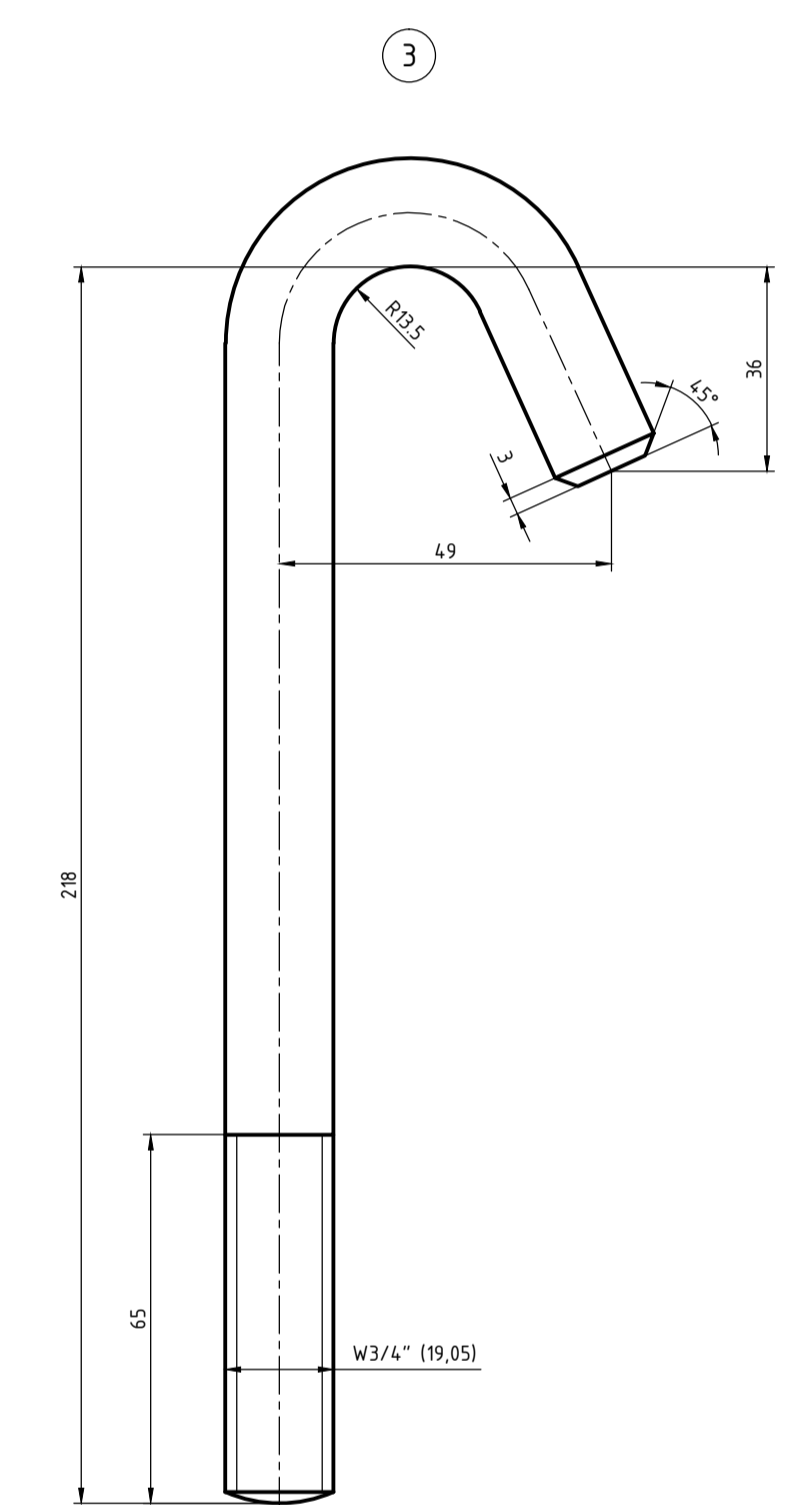
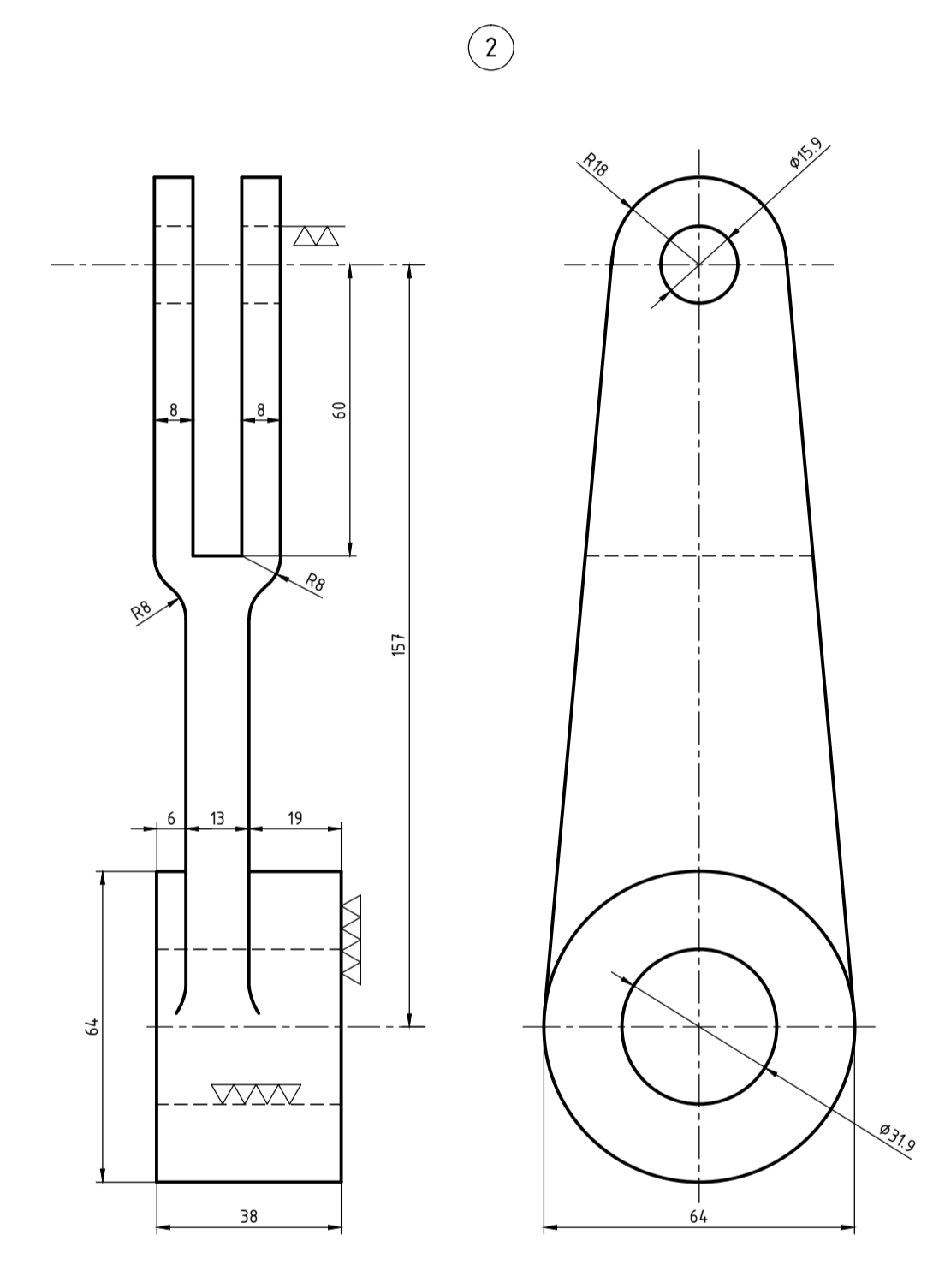
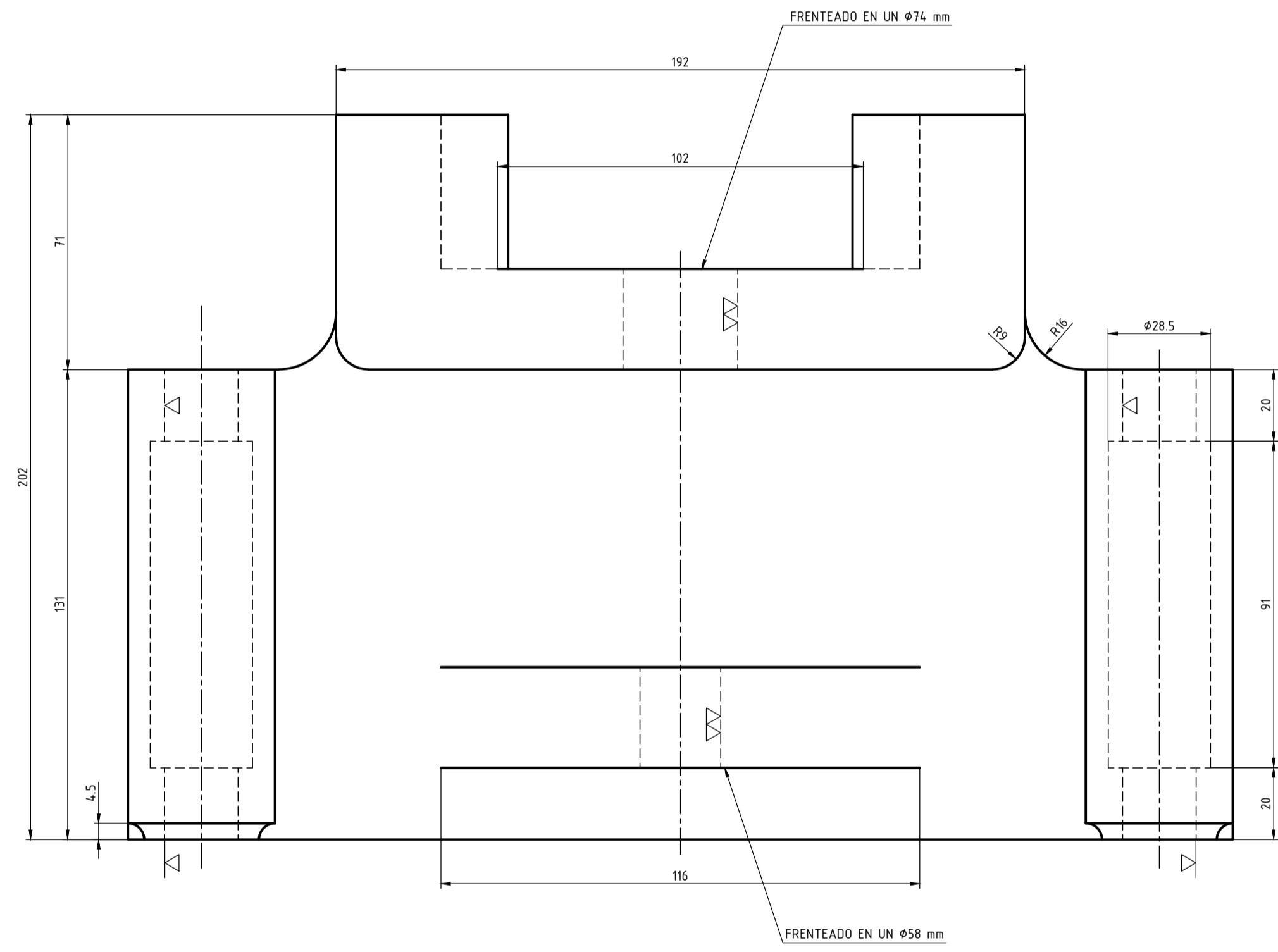
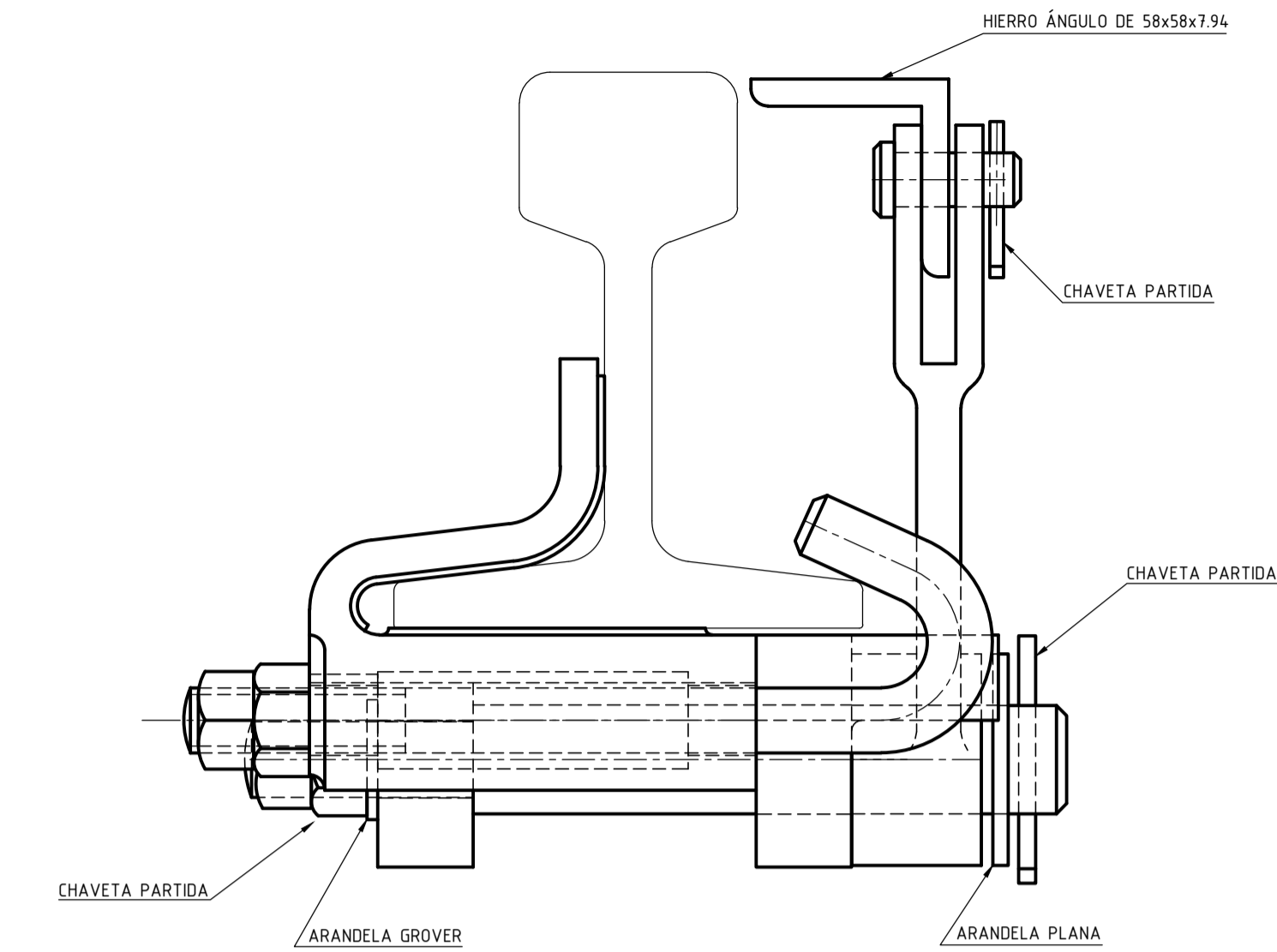
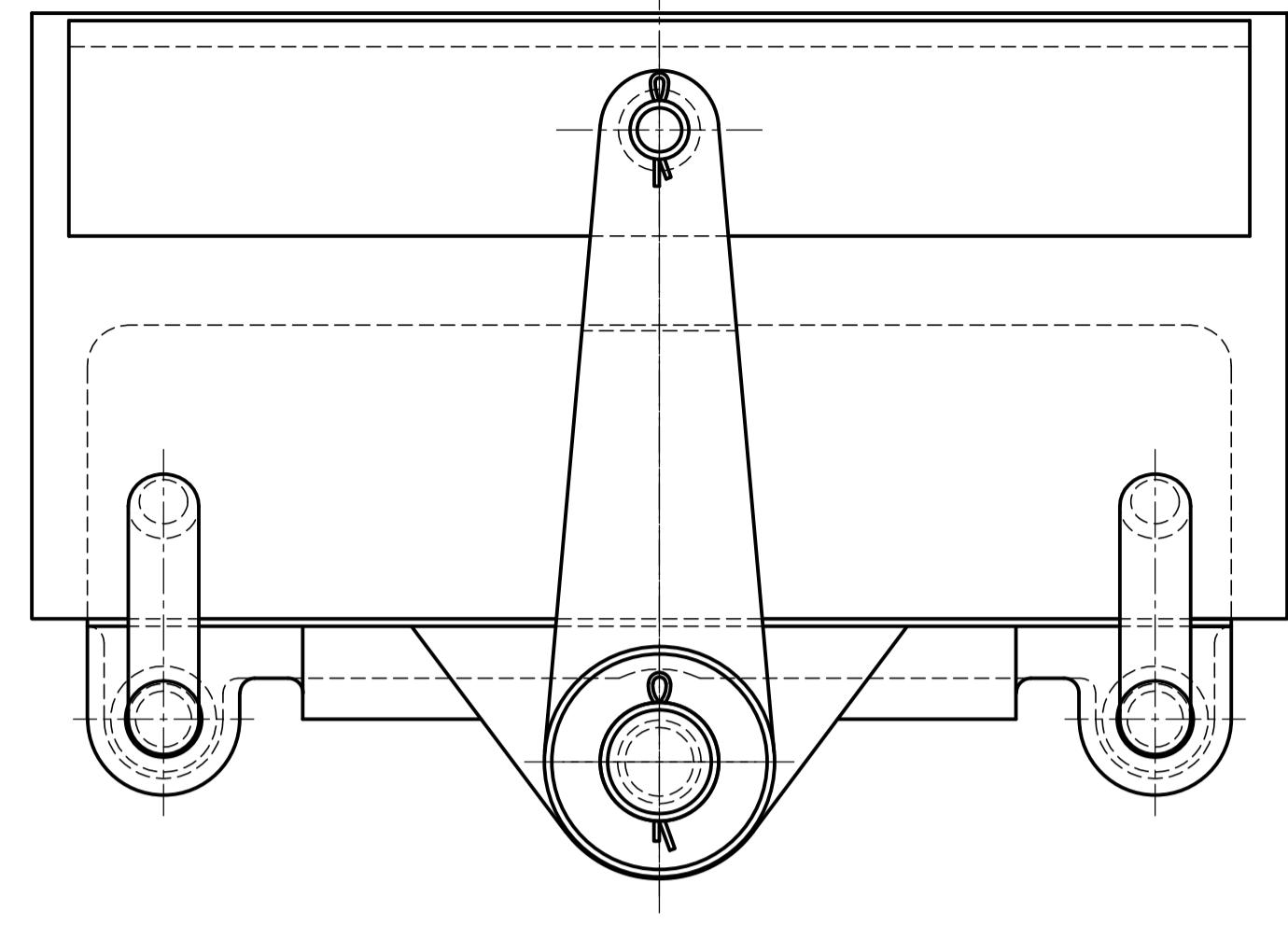
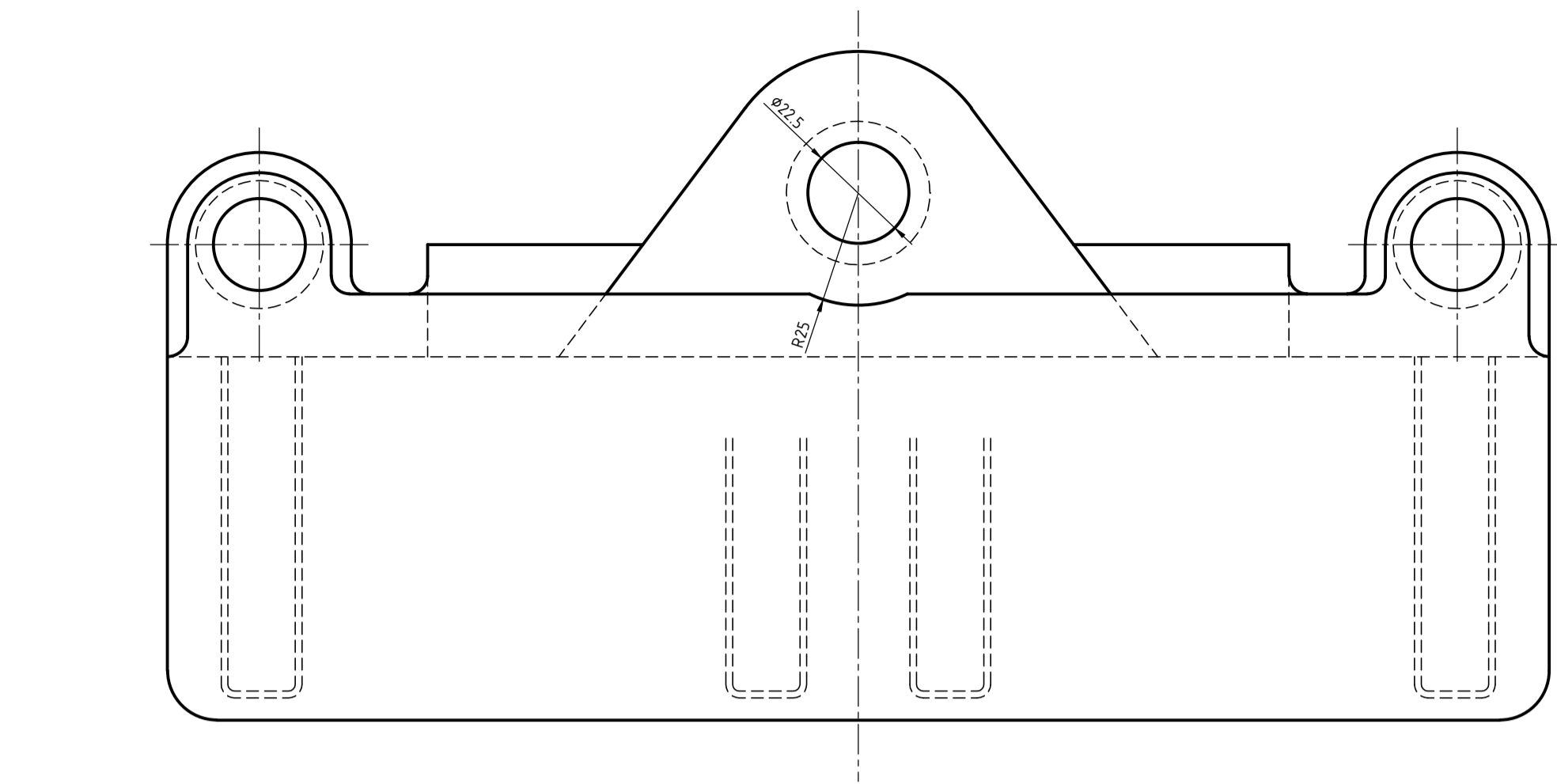


CONJUNTO ARMADO



PESO TOTAL DEL CONJUNTO 12.500 Kg APROX.
 TODAS LAS MEDIDAS ESTÁN DADAS EN mm.
 EL PERNO CENTRAL SE ENTREGARÁ CON UNA ARANDELA PLANA DE $\phi 32$ mm Y UNA GROVER DE 25.4 mm.
 NOTA: ESTAMPADO EN UNA SOLA PIEZA.

Nº	DESIGNACION	MATERIAL	CANTIDAD	PESO
1	SOPORTE	ACERO FUNDIDO RECOCIDO SAE 1010		11,6 Kg
2	BRAZO	ACERO FUNDIDO RECOCIDO SAE 1010		1,4 Kg
3	PERNO DE FIJACION	SAE 1010		0,7 Kg
4	PERNO CENTRAL A38 IRAM 508	SAE 1010		1,45 Kg
5	PERNO A37 IRAM 507	A37 IRAM 507		0,05 Kg

Dibujo	Valdez, Juan	4/11/2015		Linea Gral. Roca
Reviso				
Aprobo			Título: CLEPE TIPO 6	Plano N°:
Escala	S/E			
Rev.	0			Obs.:
				SJ.612 S.771