

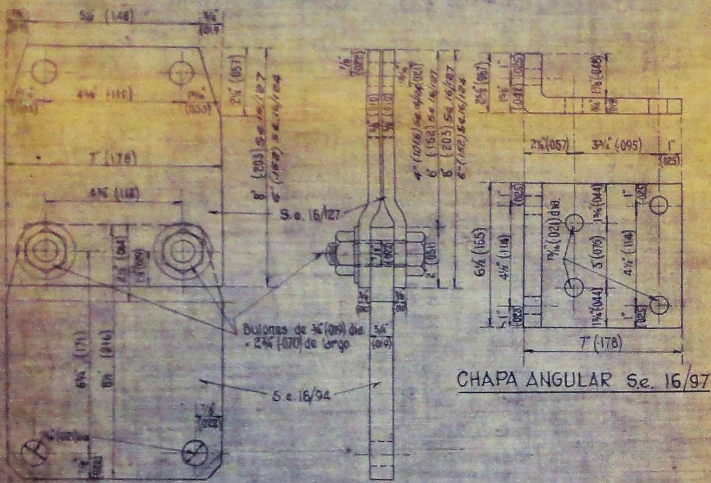
F.C.C.A. LINEAS ELECTRIFICADAS

ANCLAS PARA RIEL CONDUCTOR

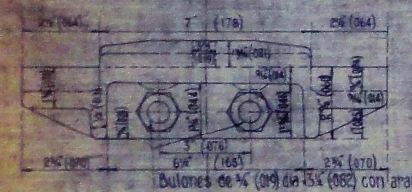
ESCALAS 1:1 1:2 1:3 y 1:4

TN. 871/1

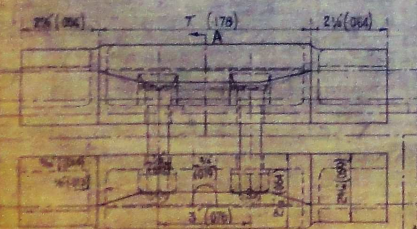
HOJA 3 MAY 4 HOJAS
 JEFE DEPARTAMENTO VIA Y OBRAS
 MATR. NAC. 3564



CHAPA Y PIEZA DE EXTENSION GALVANIZADAS
 Se. 16/94 y Se. 16/127



GRAMPA PARA RIEL CONDUCTOR - Se. 16/109



SUPLEMENTO Y PIEZAS RECORTADAS PARA ANCLA D

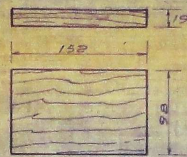
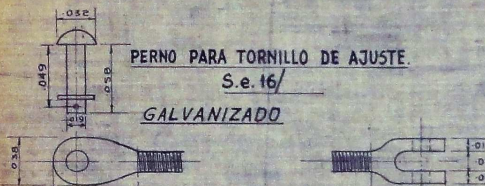
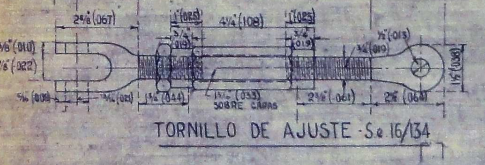


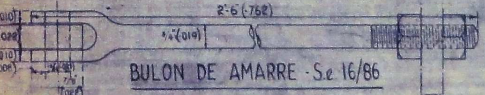
TABLA DE DISTANCIA Se. 16/171



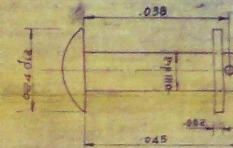
PERNO PARA TORNILLO DE AJUSTE
 Se. 16/
 GALVANIZADO



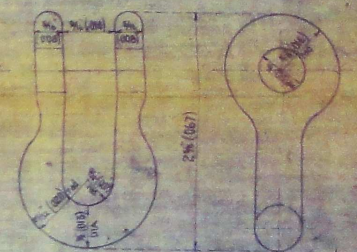
TORNILLO DE AJUSTE - Se. 16/134



BULON DE AMARRE - Se. 16/86



PERNO PARA ES LABON
 Se. 16/121
 GALVANIZADO



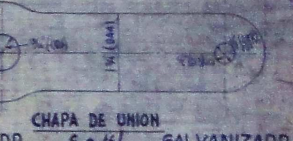
ES LABON GALVANIZADO
 Se. 16/101



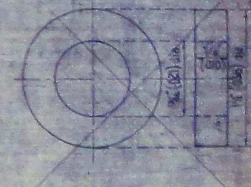
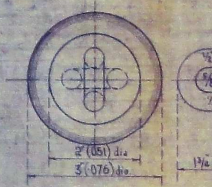
ARANDELA CUADRADA Se. 16/83



PERNO P/CHAPA DE UNION
 Se. 16/
 GALVANIZADO



CHAPA DE UNION
 Se. 16/
 GALVANIZADO



ARANDELA CIRCULAR Se. 16/

ES LABON AISLANTE Se. 16/103

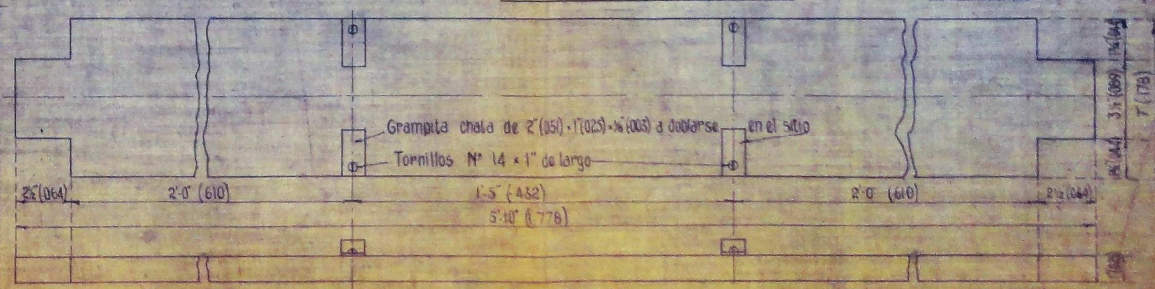


TABLA DE DISTANCIA Se. 16/151