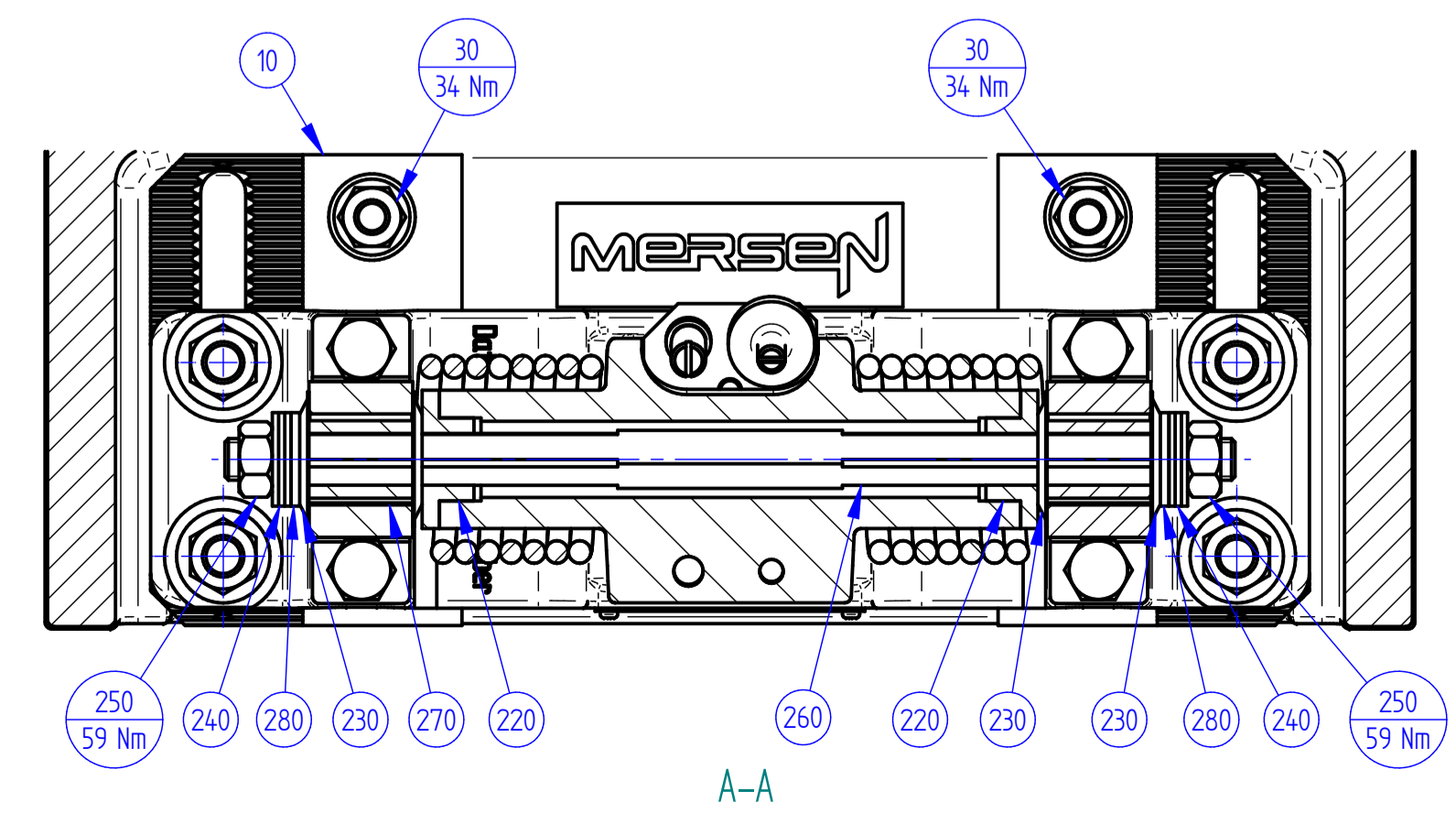
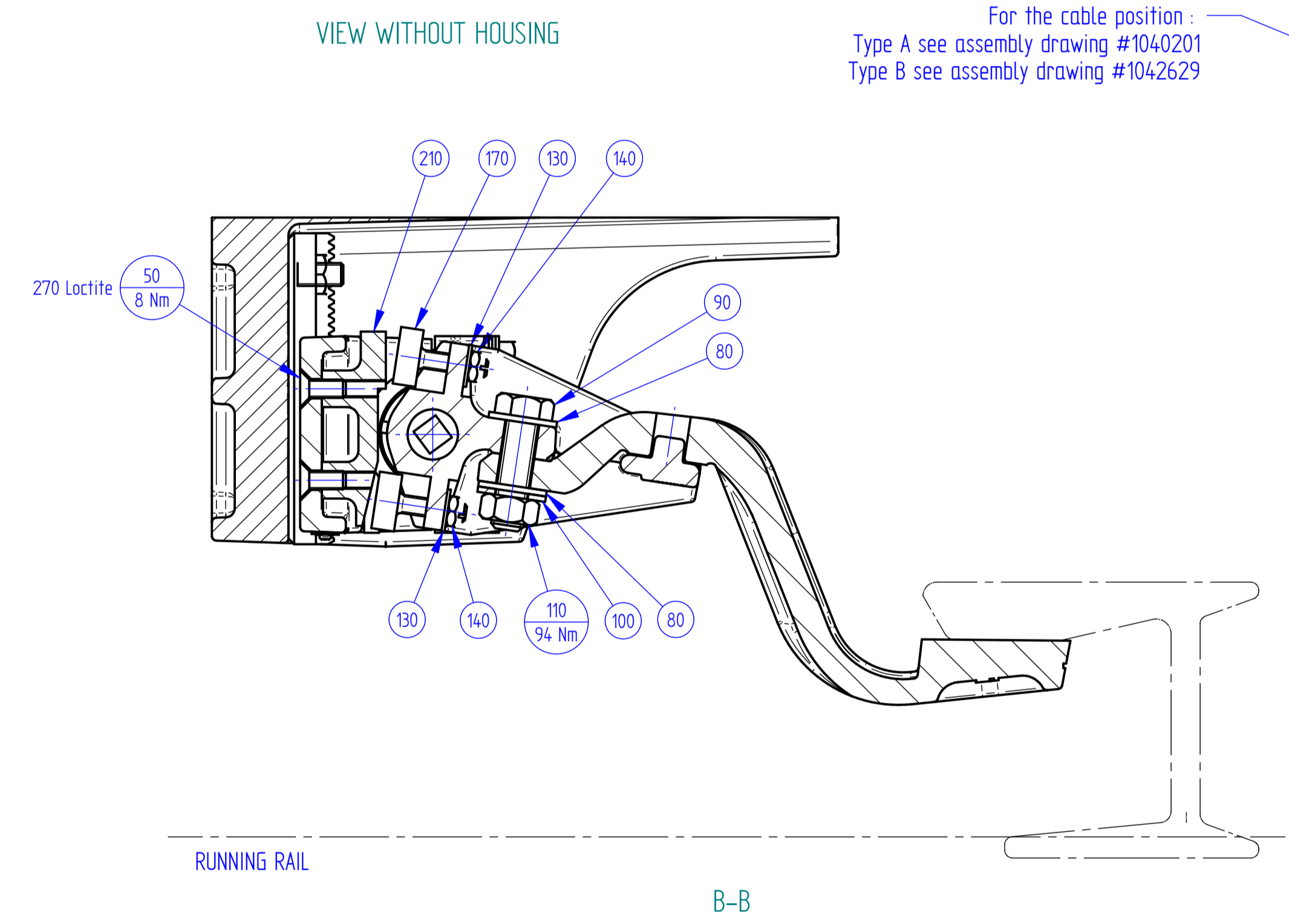
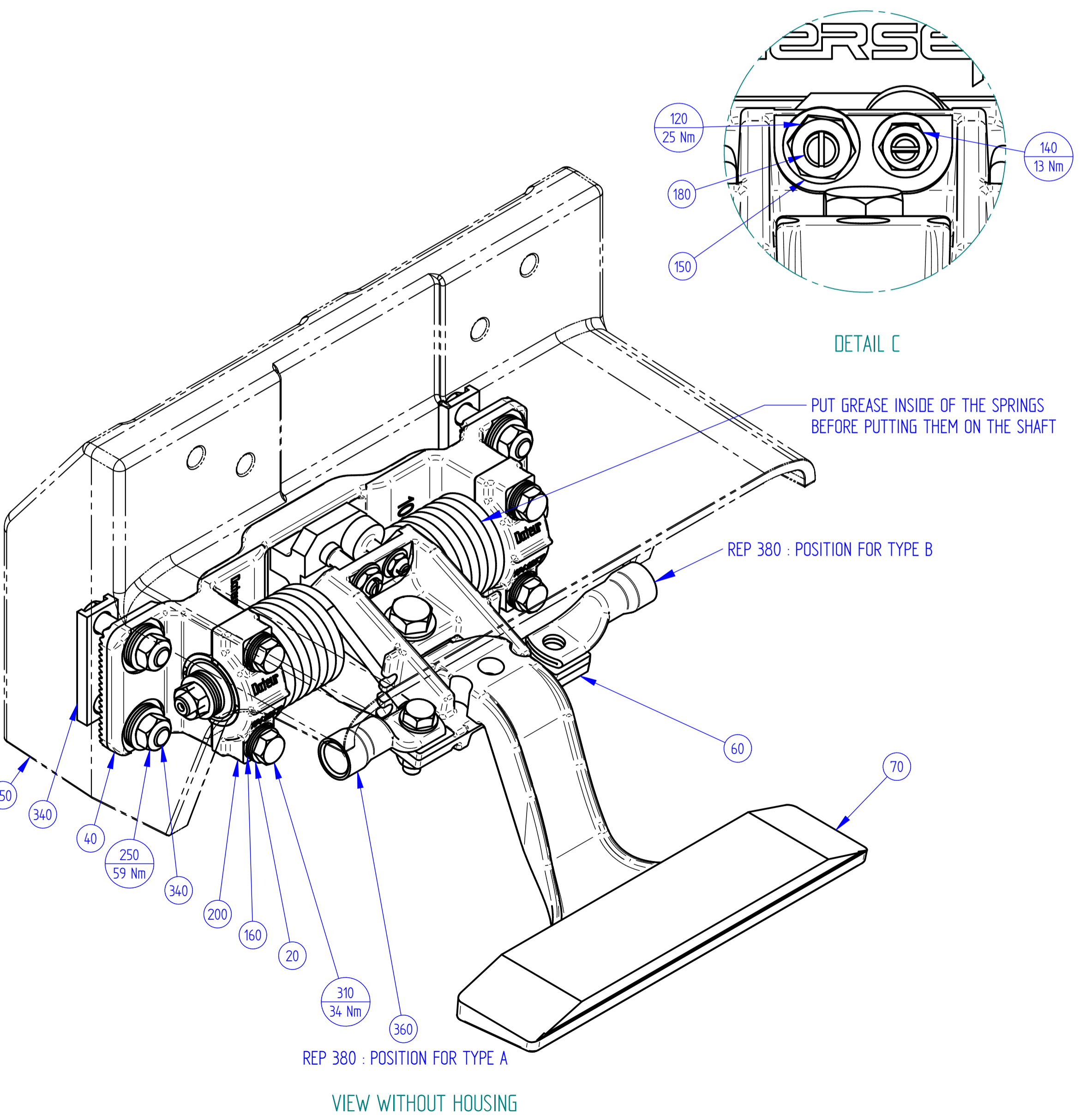


TORQUES ARE GIVEN FOR SCREWS AND NUTS WITH LUBRICANT OR GREASE EXCEPT ANNOTATION

Torques are given following standard NF E 25-030-1- 1984  
 Rubbing coefficient : 0.1  
 Wrench class : B  
 Following material class : (6.8 ; 8.8 ..)  
 Low nuts similar 6.8 material class



For the cable position :  
 Type A see assembly drawing #1040201  
 Type B see assembly drawing #1042629

Rep/Item	Qté/Qty	Désignation	Description	Dessin/Drawing	ARTICLE
360	1	CABLE DE LIAISON	CABLE	1042092	J1042092
350	1	SEMELLE ISOLANTE	INSULATING FRAME	1040984	E1040984
340	2	GUIDE CREMALLIERE	GUIDE RACK	126567	Y126567
330	2	VIS TAPITTE TCB,POZ,M03-6	TAPITTE SCREW TCB,POZ,M03-6	041926	X041926
320	1	ETIQUETTE MARQUAGE PRODUIT	LABELING PLATE	1041266	L1041266
310	4	VIS H M10-45,A4-80,NF E27-311	M10-45 stainless steel hex cap screw	071998	J071998
300	1	RESSORT DE TORSION A GAUCHE	LEFT HAND SPRING	1041246	P1041246
290	1	RESSORT DE TORSION A DROITE	RIGHT HAND SPRING	1041247	Q1041247
280	2	ROND.M12,A4,NF E25-514	FLAT WASHERM12,A4,NF E25-514	071983	S071983
270	2	ARTICULATION ROSTA DK-S 18X30	FLEXIBLE ARTICULATION	103308	R103308
260	1	AXE PRINCIPAL DE CAPTEUR	MAIN SHAFT	1041256	A1041256
250	6	ECRH M12,A4,NF E 27-411	NUT.H M12,A4,NF E 27-411	071982	R071982
240	6	TREP 3L 12-27-5,4,INOX	SPRING WASHER TREP 3L 12-27-5,4,INOX	060355	D060355
230	4	RONDELLE DE PROTECTION	PROTECTING WASHER	072032	W072032
220	2	ENTRETOISE	SPACING WASHER	103303	L103303
210	1	BUTEE MECANIQUE	MECHANICAL STOP	1041258	C1041258
200	2	CHAPE	CLAMP	1041257	B1041257
190	1	VIS H M10-40, A4-80, NF E 27-311	SCREW H M10x40, A4-80, NF E 27-311	072273	H072273
180	2	BUTEE FRANCHE M10 L=35 INOX	ADJUSTMENT STOP M10 L=35	103502	C103502
170	2	BUTEE PLATE M08 L=30 inox	FLEXIBLE STOP	103815	S103815
160	6	ROND.M10,A4,NF E25-514	FLAT WASHERM10,A4,NF E25-514	071996	G071996
150	3	ROND.CS10-22-16,NF E25-511IN	SPRING WASHER.CS10-22-16,NF E25-511IN	041391	Q041391
140	2	ECROU HM, M8, A4-50, NF E 27-411	M8 HEX LOW NUT, A4-50, NF E 27-411	072036	A072036
130	2	ROND.CS08-18-14,NF E25-511IN	SPRING WASHER.CS08-18-14,NF E25-511IN	060432	M060432
120	2	ECR HM, M10, A4-50, NF E 27-411	M10 HEX LOW NUT	071995	F071995
110	1	ECRH M14,A4,NF E 27-411	NUT H M14,A4,NF E27-411	072091	K072091
100	1	ROND.CS14-30-2,4,NF E25-511IN	SPRING WASHER CS14-30-2,4,NF E25-511IN	072085	D072085
90	1	VIS H M14-50,A4-80,NF E27-311	SCREW H M14-60,8-8,NF E27-311	072082	A072082
80	2	ROND.M14,A4,NF E25-514	FLAT WASHER M14,A4,NF E25-514	072084	C072084
70	1	BRAS DE CAPTAGE USINE	MACHINED ARM	1040990	L1040990
60	1	SUPPORT BRAS USINÉ	ARM SUPPORT	1041129	M1041129
50	2	VIS FHC M08 - 20, INOX	COUNTERSUNK HEADSCREW M8x20	103611	W103611
40	1	SUPPORT DE CAPTEUR	CCD SUPPORT	1040989	K1040989
30	7	ECRH M10,A4,NF E 27-411	NUT.H M10,A4,NF E 27-411	071999	K071999
20	10	TREP 3L 10-22-4,5,INOX	SPRING WASHER TREP 3L 10-22-4,5,INOX	068586	A068586
10	2	CRÉMALLIÈRE FIXE	ADJUSTING RACK	1040985	F1040985

Matière : / Tolérances générales sauf spécifié : /  
 Material : / General tolerance unless specified : /  
 Protection : / Masse : 25.3 kg Ech. : 1:2  
 Finish : / Weight : / Scale : /  
 Date : 09/10/2013 Dessiné par : F. TIRELLI Vérifié par : O. DOSDA  
 Draw by : / Checked by : /

Ca plan strictement confidentiel est la propriété exclusive de la société MERSEN sans autorisation écrite de laquelle il ne peut être ni reproduit, ni copié, ni communiqué à des tiers.  
 This drawing and specifications there on is property of MERSEN and shall not be reproduced or copied or used in whole or in part as the basis for manufacture or sale of item without written permission.

**MERSEN**

CURRENT COLLECTOR BUENOS AIRES 1041496

Design approved by the calculation company: Vibratec