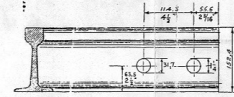


V.B.S.100/C.O.8.L.1.

METHOD OF MEASURING ANGLE 1 IN 5.

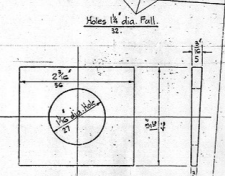
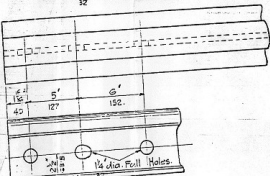
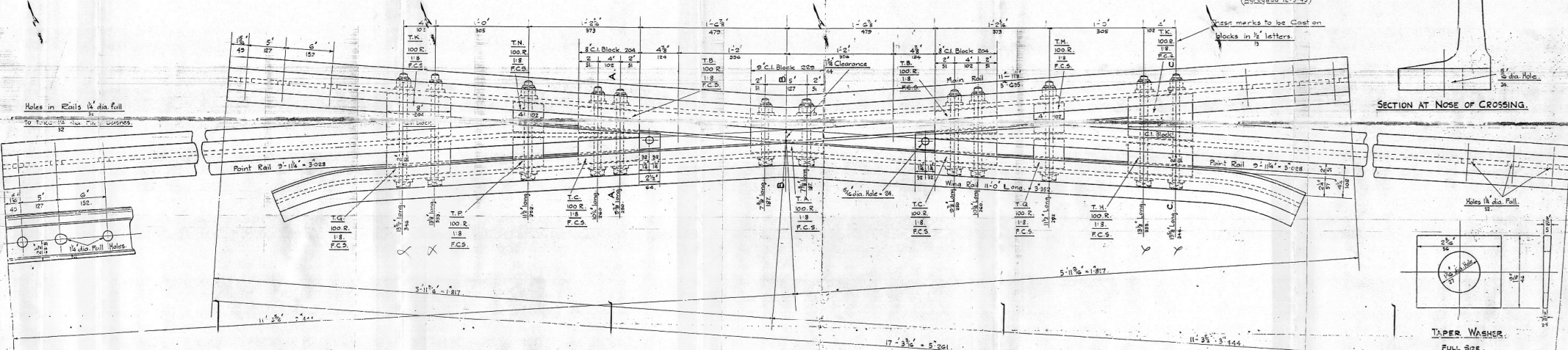


DISTRIBUCION DE AGUJEROS P.B.
(Aspeado 12.3.49)

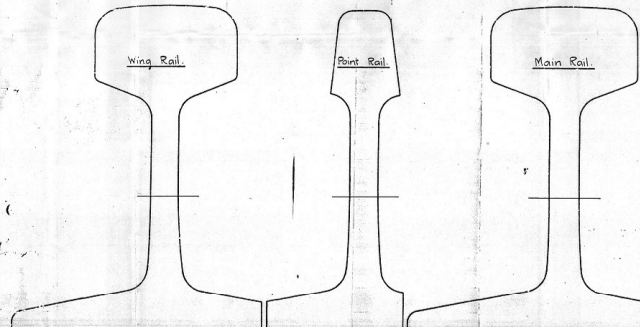
Paint marks to be Cast on
blocks in 1/2" letters.

SECTION AT NOSE OF CROSSING.

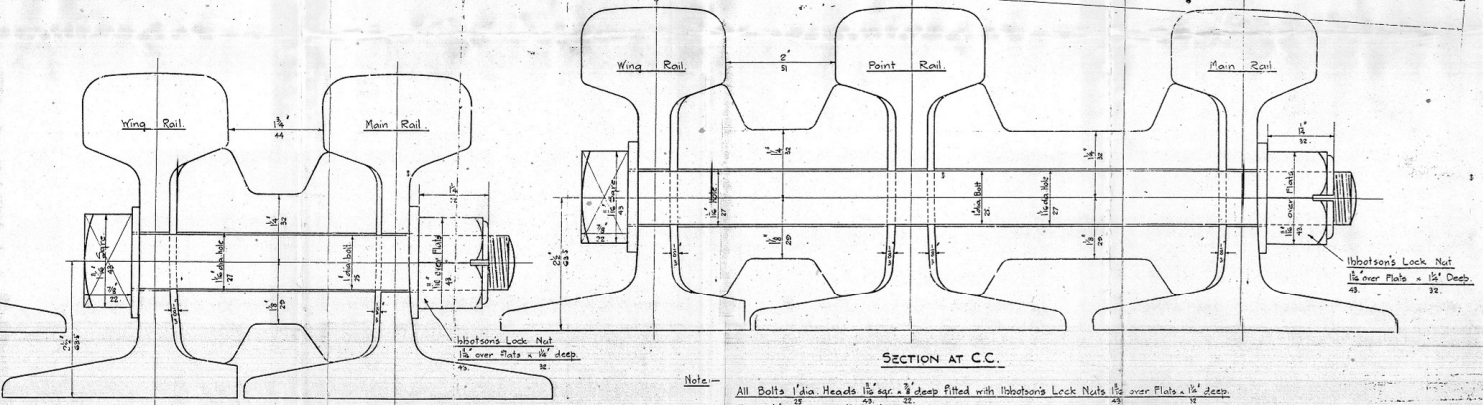
Holes in Rails 1/4" dia full
to 1/2" dia full at ends.



TAPER WASHER
FULL SIZE.



SECTION AT AA.



SECTION AT B.B.

SECTION AT C.C.

Note - All Bolts 1/4" dia. Heads 1 1/2" sq. x 3/8" deep fitted with Hobotson's Lock Nuts 1 1/2" over Plate x 1/2" Deep.
Taper Washers, supplied where necessary.

THIS PAIR OBTUSE CROSSING ANGLE 1 IN 5 CONTAINS:-

2	Main Rails 11'-11 1/2" long. 3'028.
4	Point Rails 9'-11 1/2" long. 3'028.
2	Wing Rails 11'-0" long. 3'952.
20	Cast Iron Crossing Blocks.
24	Steel Bolts 1/4" dia. with Taper Washers + Hobotson's Lock Nuts.
4	Coach Screws.
5%	Extra of C.I. Blocks, Bolts, Nuts + Washers, + Coach Screws.

BUENOS AYRES GREAT SOUTHERN RAILWAY.

OBTUSE CROSSING ANGLE 1 IN 5.
100 LBS. B. S. REV. RAIL. — GAUGE 5'-6".

SCALE: 1:5 & FULL SIZE.

Dado plano de detalle de los lacos véase 4 V.427.

DATE OF ORDER, JULY 27 1929
REQUISITION Nº B.2880.
SPECIFICATION Nº V.539.
ORIGINAL DRAWING Nº V.39.
DRAWING Nº 18717 D

P. S. & A. C.º 12º
DRAWING Nº 2054/1