

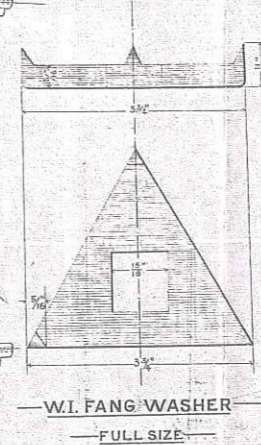
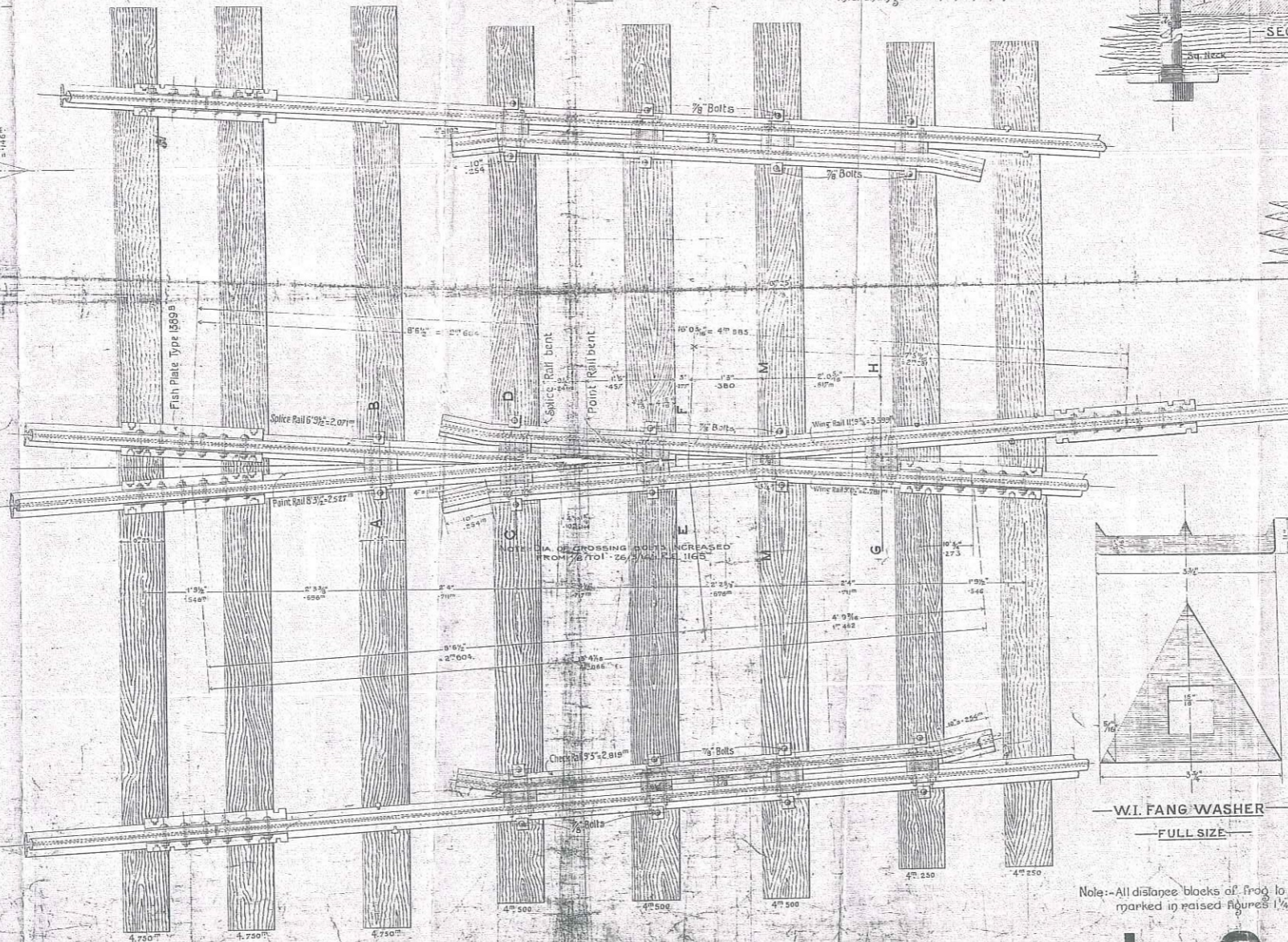
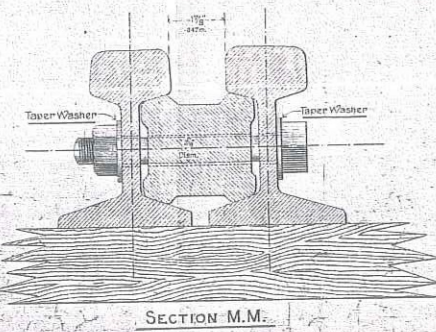
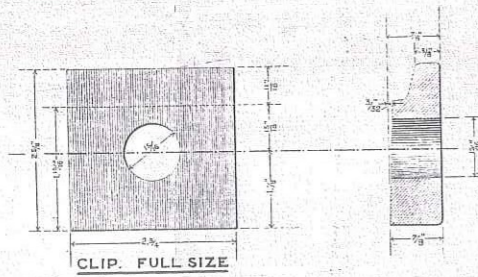
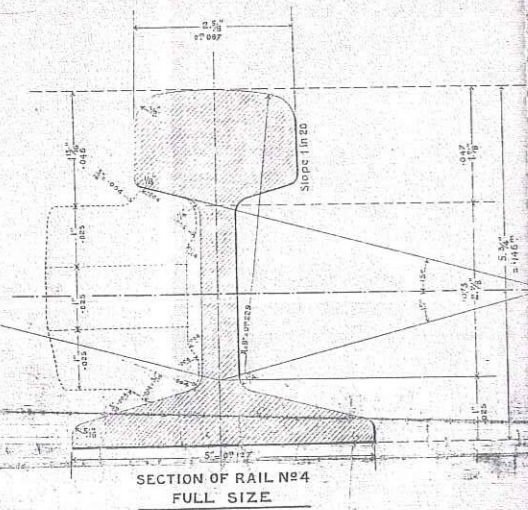
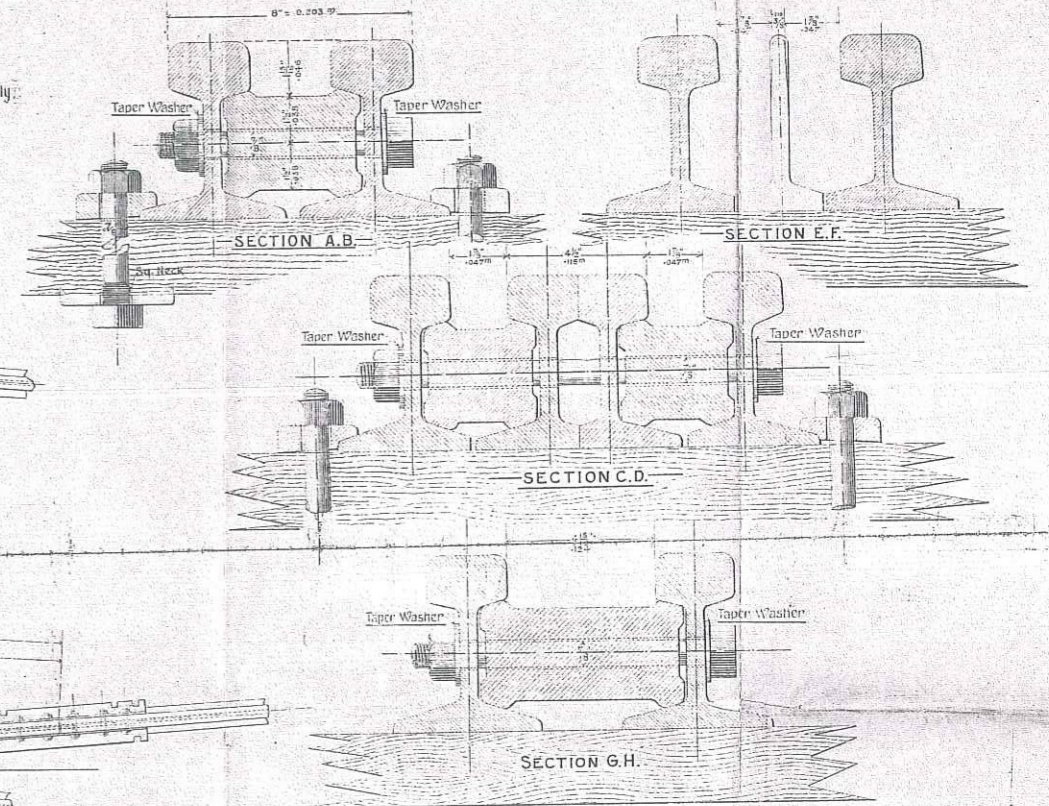
# F.C. DE B.A. AL P

## TYPE OF CROSSING 1:8 WITH SPECIAL WING RAIL RAIL N° 4

SCALES 1:10 & 1:2

All parts must be strictly to plan to be interchangeable in maintenance.

Note: This Crossing to be used in Slips only.



- LIST OF MATERIAL TO BE SUPPLIED FOR ONE COMPLETE CROSSING —
1. Frog Complete with distance blocks, bolts, taper washers Assembled as shown.
  2. Check Rails
  3. Distance Blocks (C.I.)
  16. Bolts 7/8" diam 6 1/2" Long. sq. Rd. Hex. (W.I.)
  24. Pins - 1 (steel)
  24. Holding down Bolts 7/8" diam 8" Long. Sq. Sq. Hex Length of Thread 3 3/4" (W.I.)
  24. Fang Washers (W.I.)

Note:—All distance blocks of frog to be clearly marked in raised figures 1/4, thus—

# 1 IN 8

SCALES 1:10 & 1:2

100  
1193



República Argentina - Poder Ejecutivo Nacional  
2018 - Año del Centenario de la Reforma Universitaria

**Hoja Adicional de Firmas**  
**Pliego Especificaciones Tecnicas**

**Número:**

**Referencia:** Especificaciones Técnicas RC 30582

---

El documento fue importado por el sistema GEDO con un total de 1 pagina/s.