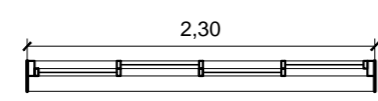


NPT

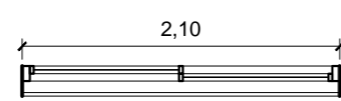
V1	
HOJAS	2
UCE UU	MOVIL
ALTURA	1.10m
ANCHO	2.3m
CANTIDAD	13



1.80

NPT

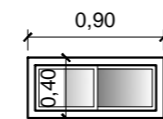
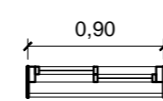
V2	
HOJAS	4
UCE UU	MOVIL
ALTURA	0.40m
ANCHO	2.30m
CANTIDAD	14



1.80

NPT

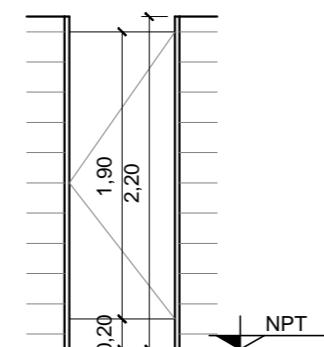
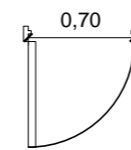
V3	
HOJAS	4
UCE UU	MOVIL
ALTURA	0.40m
ANCHO	2.10m
CANTIDAD	2



1.80

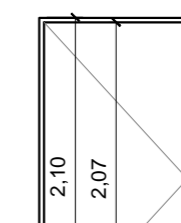
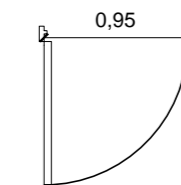
NPT

V4	
HOJAS	2
UCE UU	MOVIL
ALTURA	0.40m
ANCHO	0.90m
CANTIDAD	1



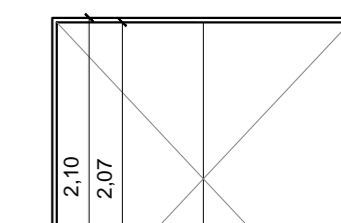
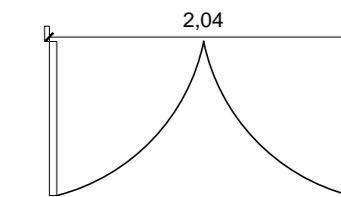
NPT

P1	
HOJAS	1
UCE UU	MOVIL
ALTURA	1.90m
ANCHO	0.70m
MANO	2
MANO	0
CANTIDAD	2



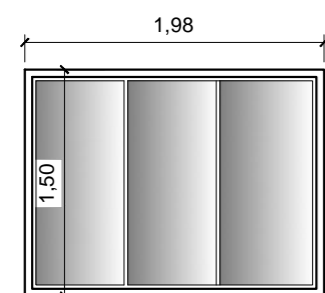
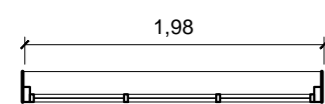
NPT

P2	
HOJAS	1
UCE UU	MOVIL
ALTURA	2.10m
ANCHO	0.95m
MANO	3
MANO	4
CANTIDAD	7



NPT

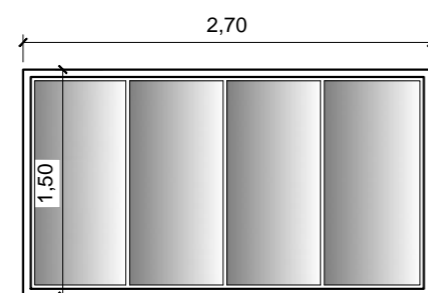
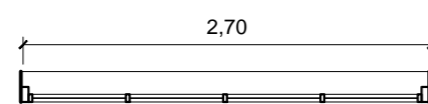
P3	
HOJAS	2
UCE UU	MOVIL
ALTURA	2.10m
ANCHO	2.04m
CANTIDAD	1



1.30

NPT

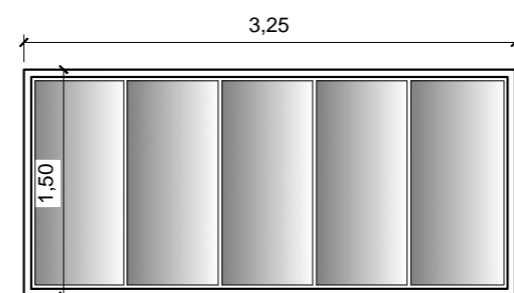
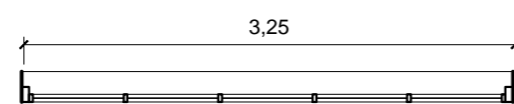
V5	
HOJAS	2
UCE UU	FIJO
ALTURA	1.10m
ANCHO	2.3m
CANTIDAD	13



1.30

NPT

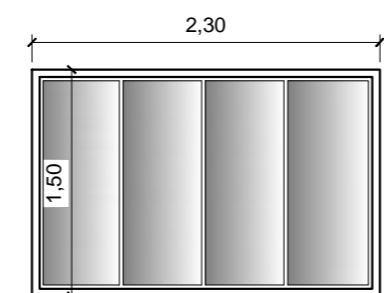
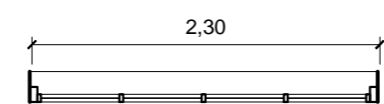
V6	
HOJAS	2
UCE UU	FIJO
ALTURA	1.10m
ANCHO	2.3m
CANTIDAD	13



1.30

NPT

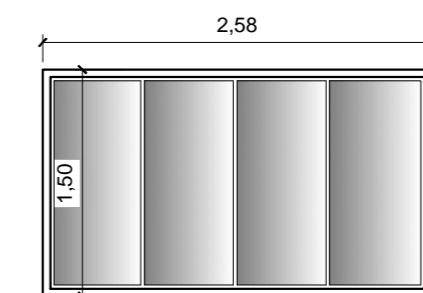
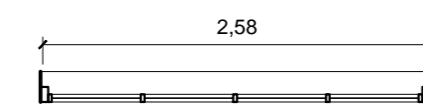
V7	
HOJAS	2
UCE UU	FIJO
ALTURA	1.10m
ANCHO	2.3m
CANTIDAD	13



1.30

NPT

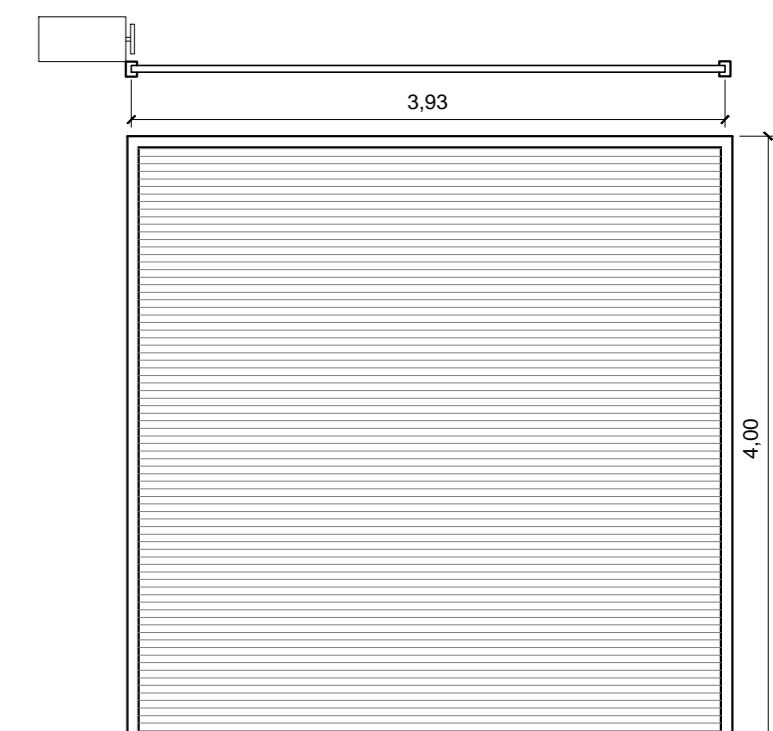
V8	
HOJAS	2
UCE UU	FIJO
ALTURA	1.10m
ANCHO	2.3m
CANTIDAD	13



1.30

NPT

V9	
HOJAS	2
UCE UU	FIJO
ALTURA	1.10m
ANCHO	2.3m
CANTIDAD	13



P4	
HOJAS	3
UCE UU	MOVIL
ALTURA	4.00m
ANCHO	4.00m
CANTIDAD	MANO

	Obra:	NUEVO ALMACEN TAPIALES		
	Válida hasta:	K TAPIALES, LA MATANZA		
SUBGERENCIA DE INFRAESTRUCTURA COORD. OBRAS DE TERCEROS	ANTEPROYECTO CARPINTERIAS		Proyectó:	ARQ. L. LAZARO
			Dibujó/Modificó:	M.M.O. J. M. PUGLIESE
		Revisó:	ARQ. L. LAZARO	
Escala:	1:50	Fecha:	26/05/15	
		NP	0 0 0 0 0 0 0 C	
		Total de Hojas:	4 de 4	