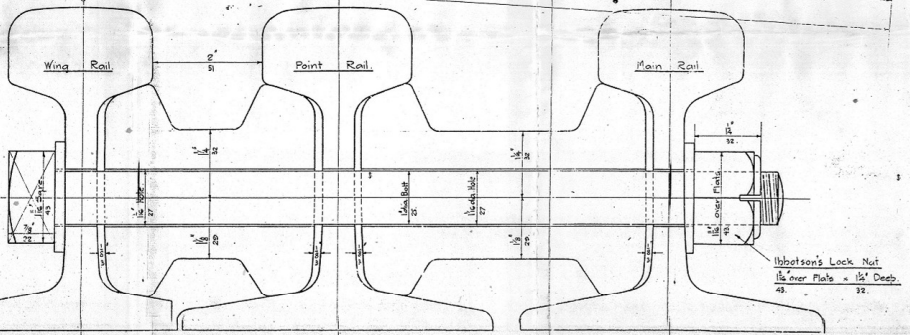
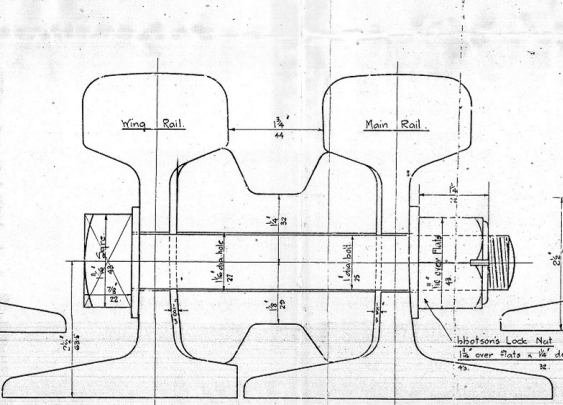
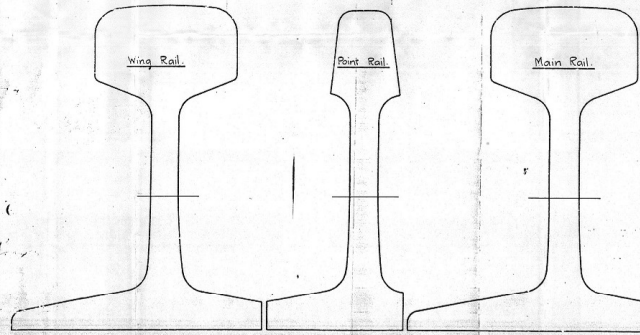
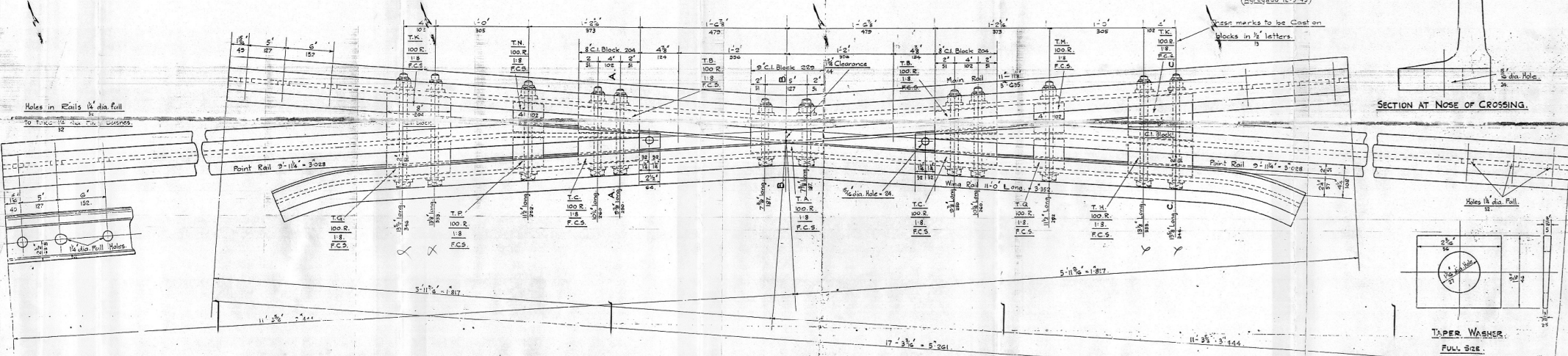
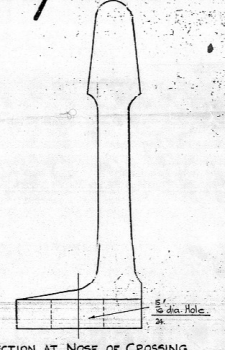
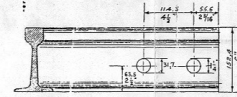
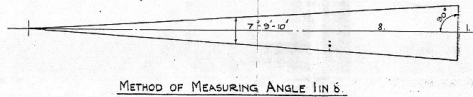


V.B.S.100/C.O.8.L.1.



THIS PAIR OBTUSE CROSSING ANGLE 1 IN 6 CONTAINS:-

2	Main Rails 11'-11 1/2" long. 3'028.
4	Point Rails 9'-11 1/4" long. 3'028.
2	Wing Rails 11'-0" long. 3'952.
20	Cast Iron Crossing Blocks.
24	Steel Bolts 1/2" dia. with Taper Washers + Hobotson's Lock Nuts.
4	Coach Screws.
5%	Extra of C.I. Blocks, Bolts, Nuts + Washers, + Coach Screws.

**BUENOS AYRES GREAT SOUTHERN RAILWAY.**

**OBTUSE CROSSING ANGLE 1 IN 6.**  
**100 LBS. B. S. REV. RAIL. — GAUGE 5'-6"**

SCALE: 1:5 & FULL SIZE.

Note: All Bolts 1/2" dia. Heads 1 1/8" dia. x 3/8" deep fitted with Hobotson's Lock Nuts 1 1/8" over Plate x 1 1/2" Deep. Taper Washers, supplied where necessary.

Dato plano de detalle de los lacos véase 44 V.427.

DATE OF ORDER, JULY 27 1929  
 REQUISITION Nº B.2880.  
 SPECIFICATION Nº V.559.  
 ORIGINAL DRAWING Nº V.39.  
 DRAWING Nº 18717 D

P. S. & A. C.º 1º  
 DRAWING Nº 2054/1